

hidden assets

Clever camouflage disguises a wealth of features in a Chicago-area kitchen that acts smaller—yes, smaller—than it really is.

Writer: Mara Boo Photographer: Werner Straube Field editor: Megan Chaffin

Impressively detailed cabinetry, along with refined materials such as cherrywood and marble, announce elegant aspects of the McDermotts' kitchen, while gleaming chrome light fixtures, a painted blue island, and a zinc range hood inject fresh attitude.

Bigger isn't always better.

But when your house is the preferred gathering spot for a large extended family, bigger can be downright wonderful. Just ask Bridget and Mike McDermott. "Mike and I both have enormous families. He has 56 first cousins. Our three kids already have 20 first cousins, all under the age of 4!" Bridget says with a laugh.

In fact, family is the reason the kitchen in the McDermotts' new Dutch Colonial-style home measures an abundant 900 square feet. Yet unlike many kitchens today, it was actually built to feel smaller. "We needed to be able to accommodate everyone," Bridget says, "but we still wanted it to feel really cozy."

And it does, gathering the couple's pajama-clad toddlers around the breakfast table as comfortably as it invites partygoers to the island—a testament to the combined efforts of residential designer Brad Lewis, builder Jay Riordan, and interior designer Jeff Jones. All of them maintained a singular focus on Bridget's desire for a warm, welcoming home. "This kitchen is deceiving," Jones says. "It's what you don't see that would make it seem so much bigger if all that stuff were out in the open."

Opposite: A porcelain farmhouse-style sink is bracketed by painted and glazed cabinetry. "We wanted a patina that would give a warm, comfortable feeling," interior designer Jeff Jones says. Twin dishwashers are veiled by paneled fronts. **Below:** The 10x6-foot island anchors the kitchen, providing space for food prep and serving, while a microwave, warming drawer, trash receptacles, and pot storage reside below. **Right:** A prep sink is equipped with custom-fitted cutting surfaces.





Sophisticated Storage

Bridget McDermott is a firm believer in the mantra, "A place for everything, and everything in its place." Her highly organized kitchen boasts plenty of dedicated storage—though not where you might expect to find it. Here are some of her smart strategies.

PARK IT. A pair of countertop appliance garages stow the toaster, coffeemaker, and even baby bottles out of sight but within easy reach. "Everything's hidden but still right where I need it," Bridget says.

SHUT THE DOOR. Also unseen are Bridget's paperwork, files, and computer equipment. "I love my chef's office," she says, "especially because I don't feel like I have to keep it clean all the time. I can just close the door."

THINK BIG. A spacious walk-in pantry enables Bridget to store dry food items together in one place, simplifying meal prep for even the youngest family members. "The kids can just walk right in and see where everything is, rather than open up a bunch of cabinets to find breakfast cereal," she says.

Rather than encumber walls with endless cabinets, for example, food and other everyday items are stored in a large walk-in pantry. A trio of refrigerators and freezers are masked by planked wood doors, as is Bridget's home office. Even countertop appliances are hidden from view—yet readily accessible thanks to lift-up doors. "That's the real beauty of this kitchen," Jones says. "By making everything go away, it takes away the visual clutter. Who wants to look at three refrigerators?"

Indeed, a stainless-steel, professional-style range is the only visible appliance in the entire room, acceptable to Bridget because it creates an eclectic focal point in tandem with the cooking alcove's custom-crafted zinc range hood. "It looks like maybe we stumbled upon it in a little shop somewhere and decided to install it in our kitchen," she says of the hood. Further contributing to the kitchen's found quality is a large, furniture-style island cloaked in Bridget's favorite color: robin's-

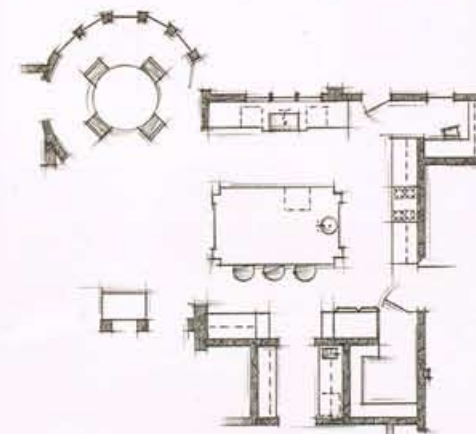
egg blue. "We're traditional in our taste, so we could have gone with white, or even dark wood, but we're a little bit of fun, too," she says—which also explains the chicken wire cabinets housing the couple's everyday dishes.

Still, classic white marble countertops and schoolhouse-style pendant lights are nostalgic reminders that this is, after all, a timeless kitchen that honors what matters most: family. "The island is where the kids will one day do their homework while I cook," Bridget says. That is, when it's not playing host to all those relatives.

RESOURCES BEGIN ON PAGE 116

Opposite: A display shelf and recessed niches—one featuring a pot filler—soften the industrial pedigree of the professional-style range. Oils and spices tuck into narrow cabinets flanking the range. **Above:** Bridget manages her busy household from this clever "chef's office," which is lined floor-to-ceiling with beaded-board-backed open shelves. Though compact, it's a highly efficient space for organizing paperwork and files.





Opposite: Inspired by a magazine photo and at the top of Bridget's wish list for her new kitchen, the enchanting round dining nook is the McDermott family's favorite place to gather for meals. Windows flood the space with natural light and allow backyard views of playing children. Above: Cherry beaded board with crisp white trim crowns the circular ceiling in the breakfast nook. Right: Yesteryear details, such as furniture-style cabinet legs and a graciously proportioned marble backsplash, charm the butler's pantry. "This room is wine central," Bridget says, noting that the couple's barware is stored here.



8453; *annsacks.com*. **Butcher-block countertop at island**—Spekva USA, Inc.; Atlanta; 404/588-4607; *spekva.dk*. **Refrigerator, cooktop**—Thermador; 800/735-4328; *thermador.com*. **Ovens**—Miele, Inc.; 800/463-0260; *miele.com*. **Hood**—Berlin Food & Lab Equipment Co.; 877/499-4231; *berlinfoodequipment.com*. **Hood finishing**—Mac the Antique Plumber, Sacramento, California; 916/454-4507; *antiqueplumber.com*. **Wine refrigerators in dining island**—Sub-Zero, Inc.; 800/222-7820; *subzero.com*. **Pizza oven**—Mugnaini; 888/887-7206; *mugnaini.com*. **Sink at perimeter, sink at preparation island**—Blanco America, Inc.; 800/451-5782; *blancoamerica.com*. **Perimeter and island sink faucets** Tara in Brushed Nickel, **pot filler**—Dombracht USA, Inc.; 800/774-1181; *dombrachtusa.com*. **Backsplash wall fossil blue antique limestone**—Sun Marble, Hayward, California; 510/783-9900; *sunmarble.com*. **Pendant lighting at left of cooktop** Gulassa Cast Iron Pendant—Sloan Miyasato; 800/783-1398; *sloanm.com* [T]. **Recessed lighting** Mira 2—Leucos USA, Inc.; 800/832-3360; *leucosusa.com*. **Metal lighting track above preparation island** Flight Track—Bruck Lighting Systems, Costa Mesa, California; 714/424-0500; *brucklighting.com*. **Retractable window wall**—Nana Wall; 800/873-5673; *nana-wall.com*. **Window wall hardware**—Valli & Valli USA, Inc.; 877/326-2565; *vallivalli-us.com*. **Ceiling beams**—James Rogers, Concept Development, Orinda, California; 510/406-3217. **Windows**—Supreme Glass Co., Oakland, California; 510/625-8995; *supremeglass.net*. **Wood bowl**—West Elm; 866/428-6468; *westelm.com* (product line varies). **Woven baskets with succulents**—Zaragoza, San Anselmo, California; 415/485-5061. **Stock pot**—Crate & Barrel; 800/967-6696; *crateandbarrel.com* (product line varies). **Glass canisters**—Tyler Florence Shop, Mill Valley, California; 415/380-9200; *tylerflorence.com*. **Barstools at preparation island, chairs at dining island**—Crate & Barrel; 800/967-6696; *crateandbarrel.com* (product line varies). **Television**—ViewSonic; 888/881-8781; *viewsonic.com*. **Antique bowls at left of refrigerator**—Restoration Hardware; 800/910-9836; *restorationhardware.com*. **Clear cylinder vase at preparation island**—West Elm; 866/428-6468; *westelm.com* (product line varies). **Candles and holders**—Pottery Barn; 800/922-5507; *potterybarn.com* (product line varies).

Pages 68–75

HIDDEN ASSETS

Designer: Brad Lewis, formerly partner with Balsamo, Olson & Lewis, LTD., One S. 376 Summit Ave., Oakbrook Terrace, IL 60181; 630/629-9800; *boltd.com*, now with Schwarz Lewis Design Group, Inc.; 3410 Hickory Trail, Downers Grove, IL 60515; 630/963-9383; *schwarzlewis.com*.

Interior designer: Jeffrey R. Jones, Life Design,

Chicago; 630/674-8020; *lifedesignllc.com*.

Builder: Jay Riordan, Riordan Signature Homes, 4130 Ellington Ave., Western Springs, IL 60558; 708/783-1133; *riordanhomes.com*.

Cabinetry, cabinet and island paint, flooring quarter-sawn select oak hardwood—Riordan Signature Homes, Western Springs, Illinois; 708/783-1133; *riordanhomes.com*. **Wall paint**

for dining room Mount Saint Anne—Benjamin Moore; 888/236-6667; *benjaminmoore.com* [P]. **Perimeter countertop** Calacatta marble, **tile in range nook** Cracked Ceramic—through

Materials Marketing; 800/368-3901; *mstoneandtile.com* [T]. **Range**—Wolf Appliance, Inc.; 800/332-9513; *wolfappliance.com*.

Perimeter sink from the Shaws Original collection—Rohi; 800/777-9762; *rohihome.com*.

Island sink—Franke Kitchen Systems Division; 800/626-5771; *frankesd.com*. **Microwave oven**—Panasonic USA; 800/211-7262; *panasonic.com*. **Sconces at perimeter**

sink—through Lightquest, Ltd., Hinsdale, Illinois; 630/655-4454. **Pendants at island** Chart House Country Industrial in polished nickel,

chandelier at dining table, light fixture in office—Visual Comfort, Houston; 713/686-5999; *visualcomfort.com* [T]. **Curtain at sink**—Target

Stores; 800/800-8800; *target.com* (product line varies). **Dining table**—Antiques on Old Plank Road, Westmont, Illinois; 630/887-1995; *oldplank.com*. **Dining chairs, fabric**—Hickory

Chair Co.; 800/349-4579; *hickorychair.com*. **Windows**—Jeld-Wen, Inc.; 800/535-3936; *jeld-wen.com*. **Chair in office**—Henredon;

800/444-3682; *henredon.com*.

Pages 76–83

CURVES AHEAD

Architect: Glenn Fong, Glenn Chen Fong, AIA, PLLC, 3746 N. Tazewell St., Arlington, VA 22207; 703/538-5080; *glennchenfong.com*.

Interior designer: Barry Darr Dixon, Barry Dixon Inc., 8394 Elway Ln., Warrenton, VA 20186; 540/341-8501; *barydixon.com*.

Kitchen designer: Lois Kennedy, CKD, Portfolio Kitchens, Vienna, Virginia; 703/242-0330; *portfoliokitchens.com*.

Builder: Alan Cohen, ADC Builders, Inc., 2701 Tower Oak Blvd., Suite 200, Rockville, MD 20852; 301/692-4000; *adcbuilders.com*.

Cabinetry, mesquite countertops—Premier Custom-Built, Inc., New Holland, Pennsylvania; 717/354-3059; *premiercb.com*. **Granite**

countertops, two perimeter sinks in windows custom millennium cream granite—GLB Tile and Marble, Alexandria, Virginia; 703/971-4104. **Cabinet hardware**—LB Brass,

Ltd.; *lbbrass.com*. **Backsplash tile**—Walker Zanger; 877/611-0199; *walkerzanger.com*. **Sink faucets**—Waterworks; 800/998-2284;

waterworks.com. **Pot filler**—Grohe America, Inc.; 800/201-3407; *groheamerica.com*. **Sink on island, sink at perimeter prep area**—

Waterworks; 800/998-2284; *waterworks.com*. **Refrigerator and refrigerator drawers**

integrated with cabinetry—Sub-Zero, Inc.; 800/222-7820; *subzero.com*. **Range**—Wolf Appliance, Inc.; 800/332-9513; *wolfappliance.com*. **Pot rack, steel upper range hood,**

upper island countertop—Kelly Metalworks, Cookville, Maryland; 301/854-4848. **Toaster**—Cuisinart; 800/726-0190; *cuisinart.com*.

Microwave oven—GE Appliances; 800/626-2000; *geappliances.com*. **Television**—Samsung; 800/726-7864; *samsungusa.com*.

Fabric for sink skirt China Seas, **chairs in office** Beaumont & Fletcher—through J.

Lambeth & Co., Washington, DC; 202/646-1774; *jambeth.com*. **Fabric for chairs in office**—Osborne & Little; 212/751-3333;

osborneandlittle.com. **Island chairs** Dennis & Leen—Holly Hunt; 800/446-1313; *hollyhunt.com* [T]. **Fabric for chair front**—Timothy Paul

Carpets + Textiles, Washington, DC; 202/319-1100; *timothypaulcarpets.com*. **Fabric for chair backs**—Larsen, through Cowtan & Tout, New

York City; 212/753-4488 [T]. **Wallpaper on ceiling** Morris & Co.—through Rist Corp., Washington, DC; 202/646-1540. **Fabrication**

of draperies and cushions—Carol Studios, Inc., Fairfax, Virginia; 703/204-2050. **Stool**—

Amy Perlin Antiques, New York City; 212/593-5756. **Framed artwork**—Avery Fine Art & Fine Frames; 800/817-0749; *averyart.com*. **Nesting**

bowls, utensil holder on range, small pitcher holding flowers—Randall Tysinger Antiques;

877/524-0080; *randalltysinger.com* [T]. **Dining room chairs**—Hastening Antiques Ltd., Middleburg, Virginia; 888/415-0371;

hasteningsantiques.com. **Basket holding artichokes**—Pier 1 Imports; 800/245-4595;

pier1.com. **Fabric for curtain draping built-in cupboard** Winhall—Scalamandré; 800/932-4361; *scalamandre.com* [T]. **Lamp in office**—

Oly; *olystudio.com* [T].

Pages 84–91

CENTER OF ATTENTION

Architect and kitchen designer: Mark P. Finlay, Mark P. Finlay Architects, AIA, 96 Old Post Rd., Southport, CT 06890; 203/254-2388; *markfinlay.com*.

Cabinetry custom, breakfast table custom—Johnny Donadic, S. Donadic, Inc., 45-25 39th St., Long Island City, NY; 11104; 718/361-9888; *donadic.com*. **Wood countertops** walnut,

flooring antique oak—through Mark P. Finlay Architects, AIA, Southport, Connecticut;

203/254-2388; *markfinlay.com*. **Marble countertops**—New England Stone; 800/229-7866; *newenglandstone.com*. **Cabinet bin**

pulls and knobs on lower cabinets—Schaub & Co.; 866/724-2827; *schaubandcompany.com*. **Upper cabinet hardware**—Canaan

Distributors, Stamford, Connecticut; 203/356-1000; *canaanandistributors.com*. **Refrigerator integrated with cabinetry**—Sub-Zero, Inc.;

800/222-7820; *subzero.com*. **Cooktop, ovens** Framed Double Wall #D030FS—Wolf Appliance, Inc.; 800/332-9513; *wolfappliance.com*.